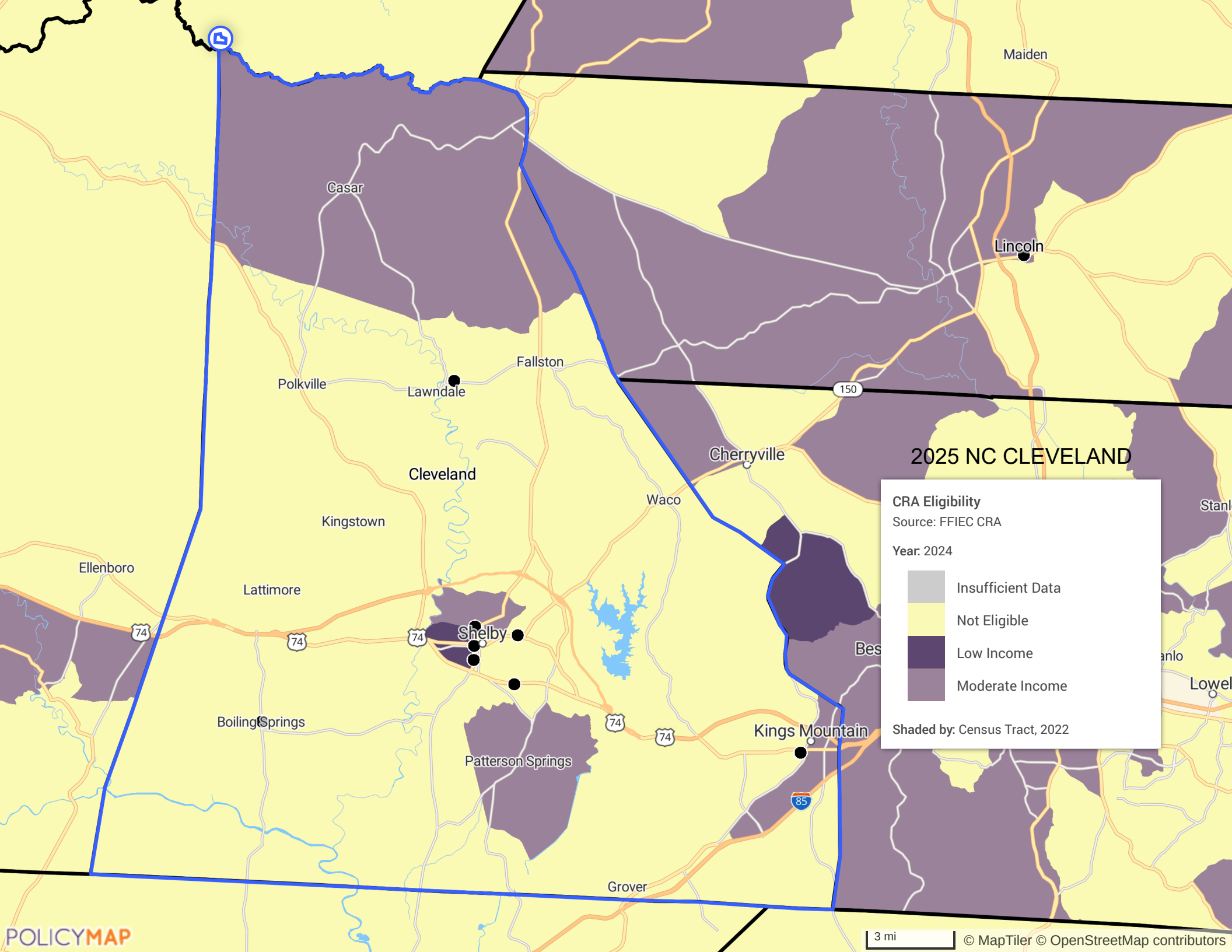


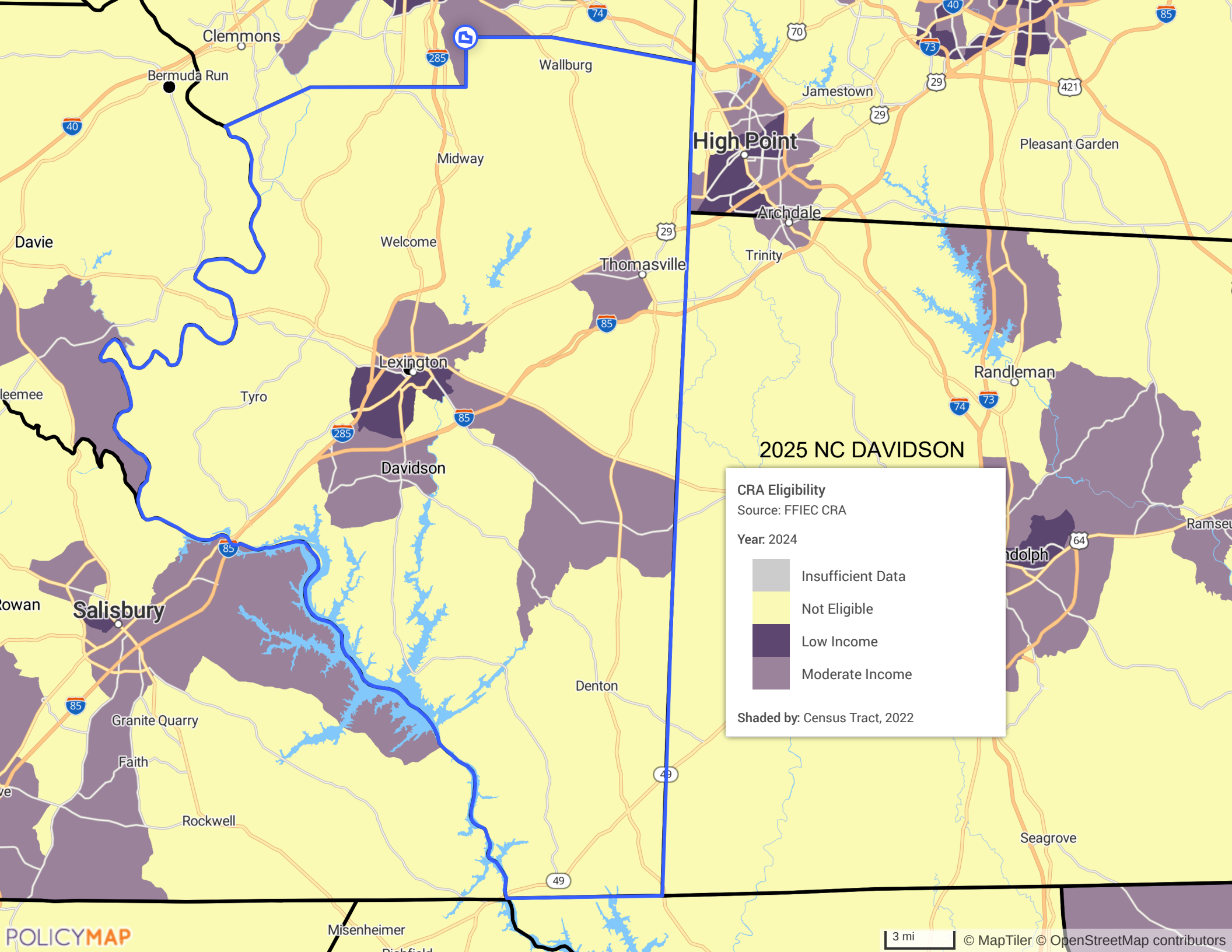
2025 NC CABARRUS

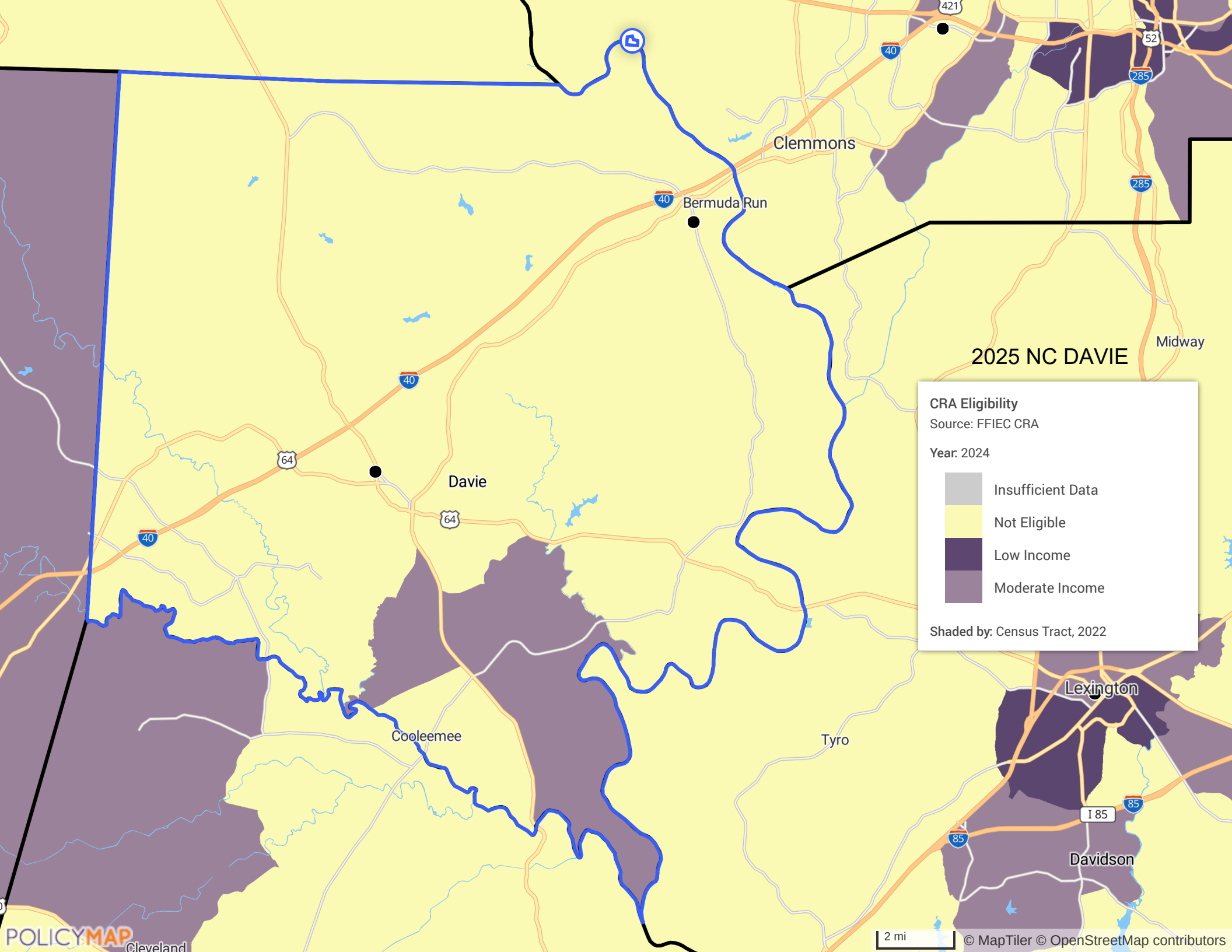
CRA Eligibility
 Source: FFIEC CRA
 Year: 2024

- Insufficient Data
- Not Eligible
- Low Income
- Moderate Income

Shaded by: Census Tract, 2022





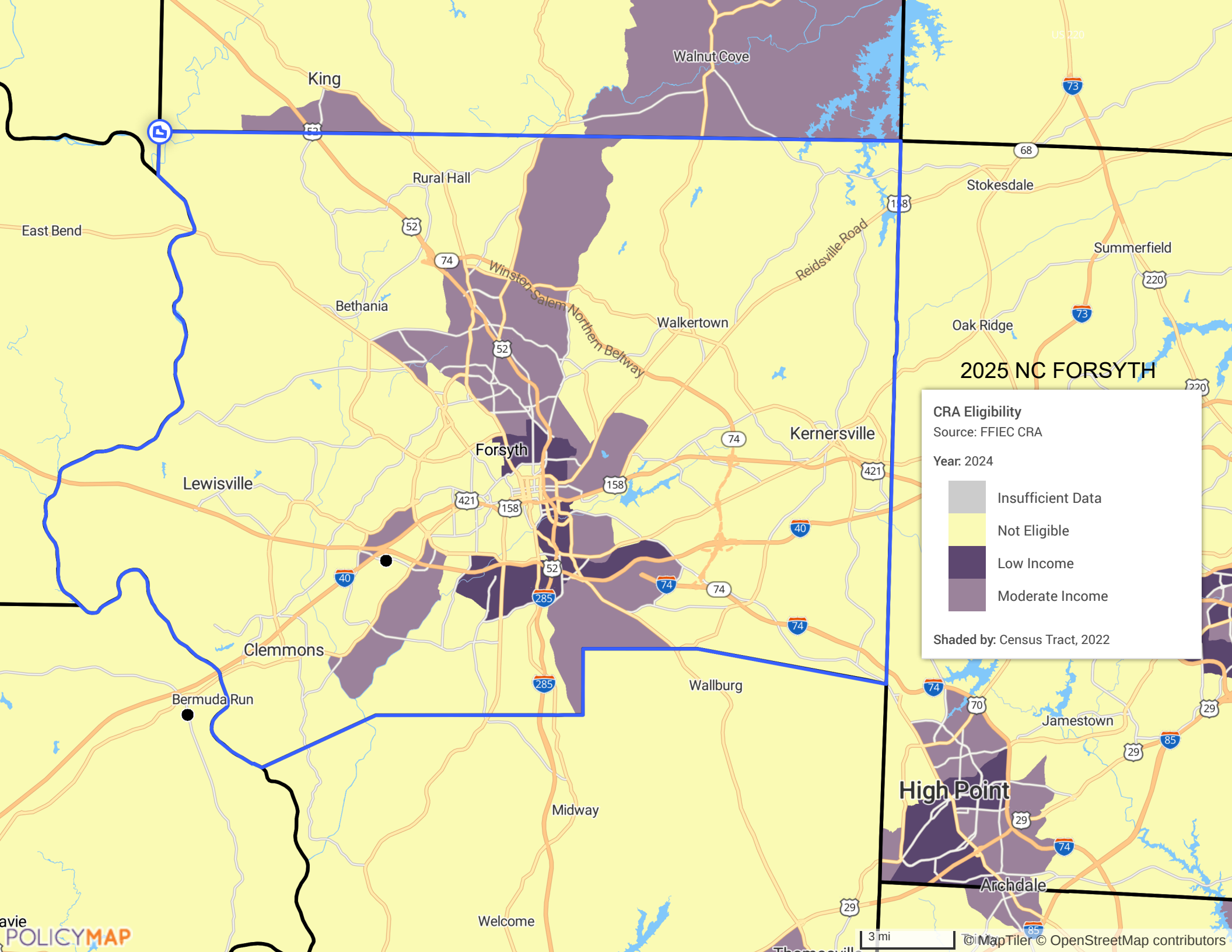


2025 NC DAVIE

CRA Eligibility
Source: FFIEC CRA
Year: 2024

- Insufficient Data
- Not Eligible
- Low Income
- Moderate Income

Shaded by: Census Tract, 2022

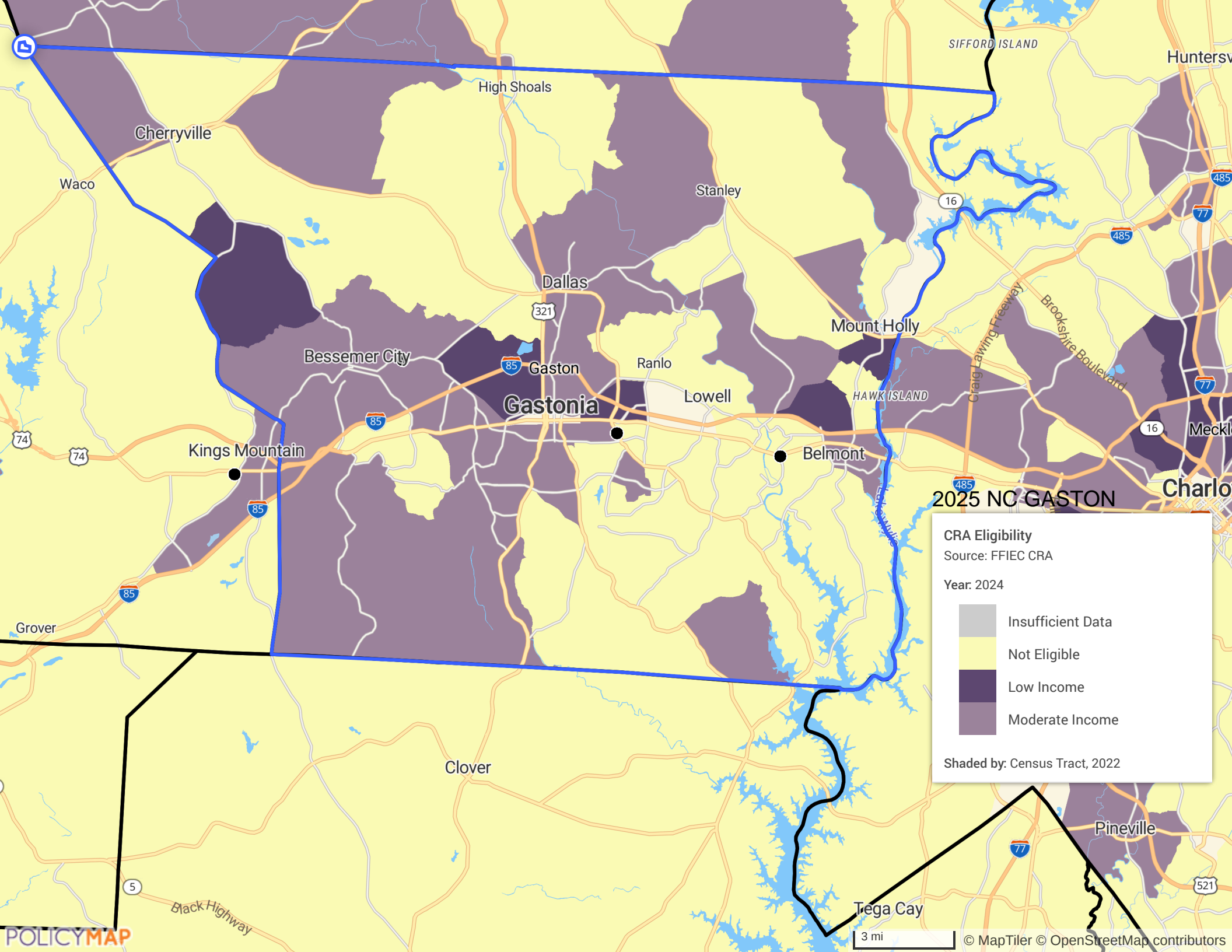


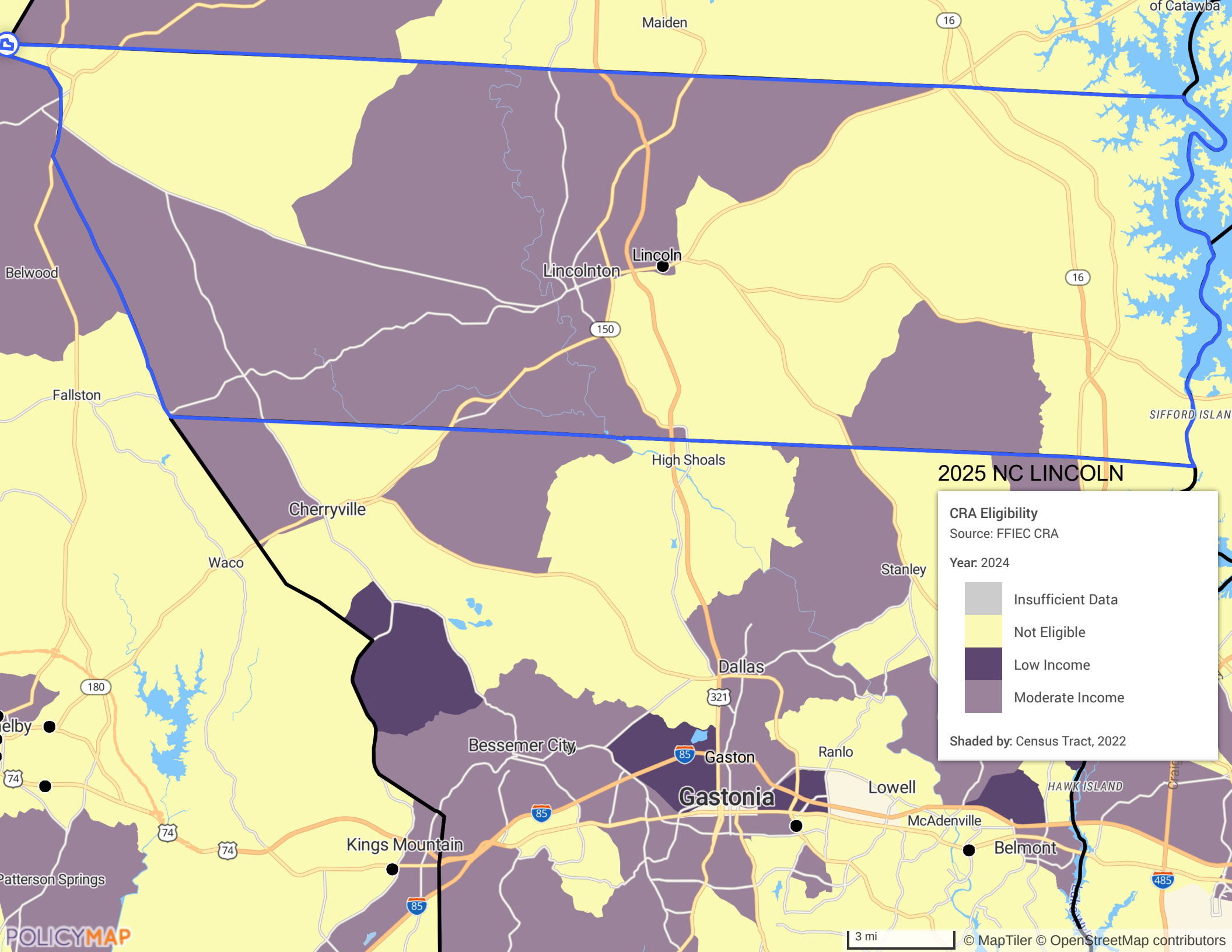
2025 NC FORSYTH

CRA Eligibility
Source: FFIEC CRA
Year: 2024

- Insufficient Data
- Not Eligible
- Low Income
- Moderate Income

Shaded by: Census Tract, 2022





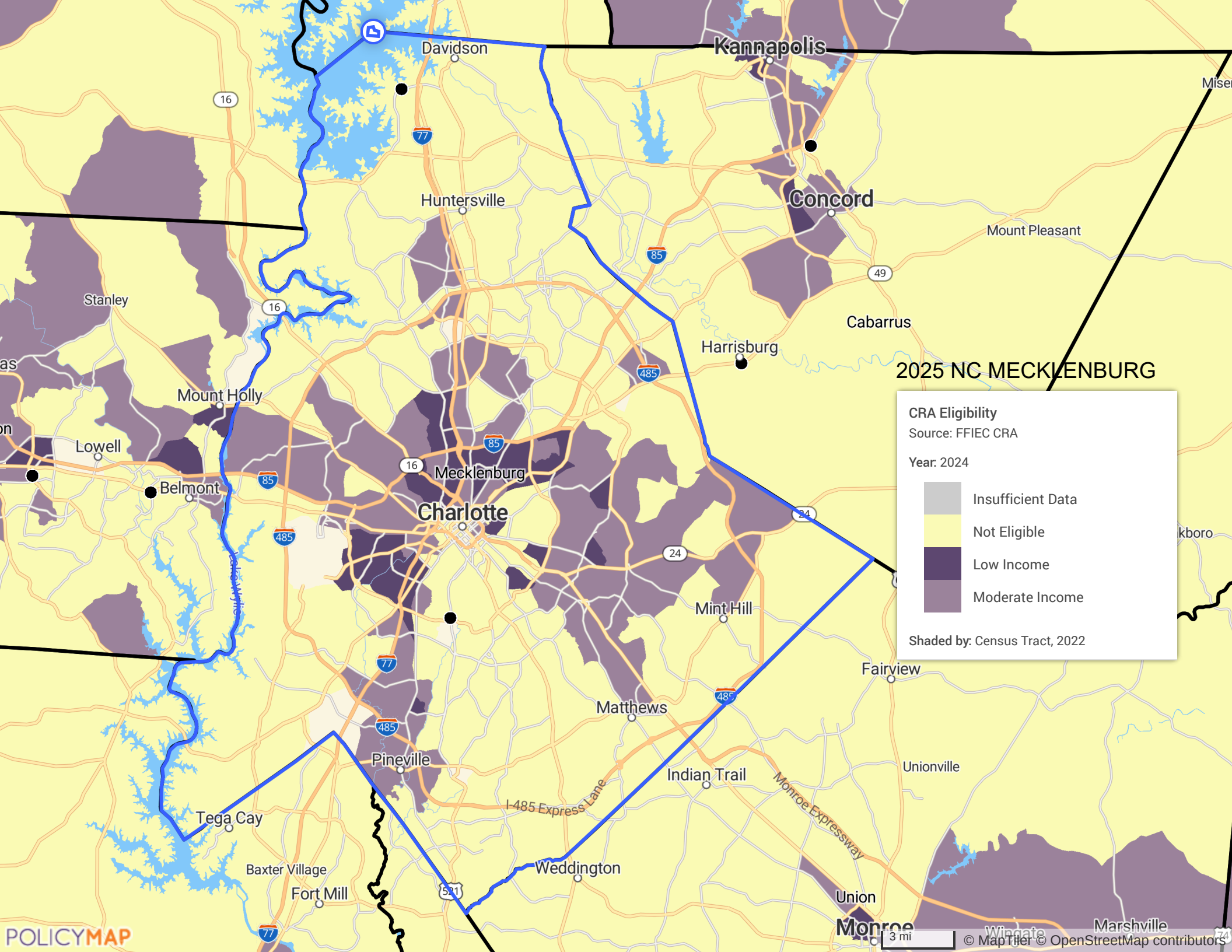
2025 NC LINCOLN

CRA Eligibility
Source: FFIEC CRA

Year: 2024

- Insufficient Data
- Not Eligible
- Low Income
- Moderate Income

Shaded by: Census Tract, 2022

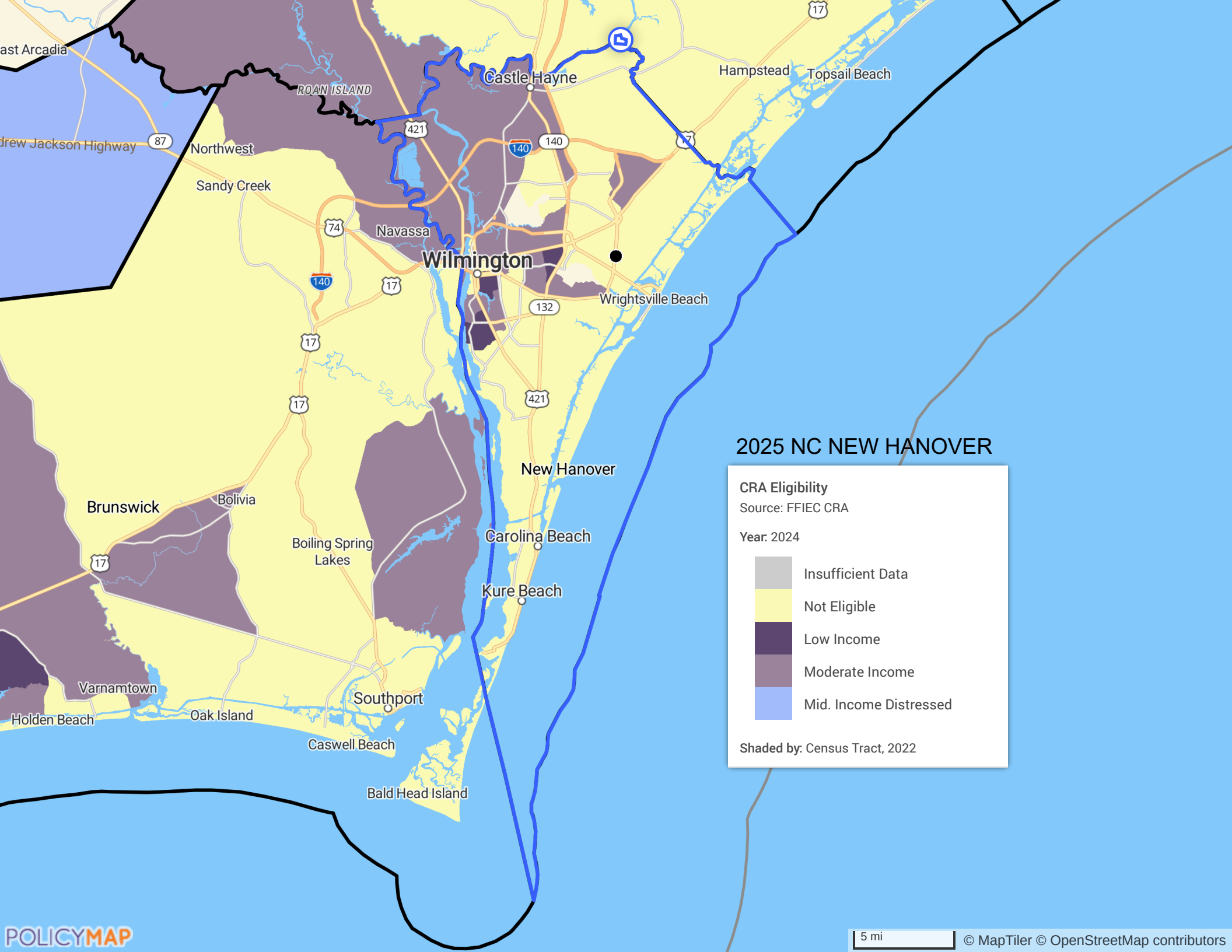


2025 NC MECKLENBURG

CRA Eligibility
Source: FFIEC CRA
Year: 2024






- Insufficient Data
- Not Eligible
- Low Income
- Moderate Income

Shaded by: Census Tract, 2022

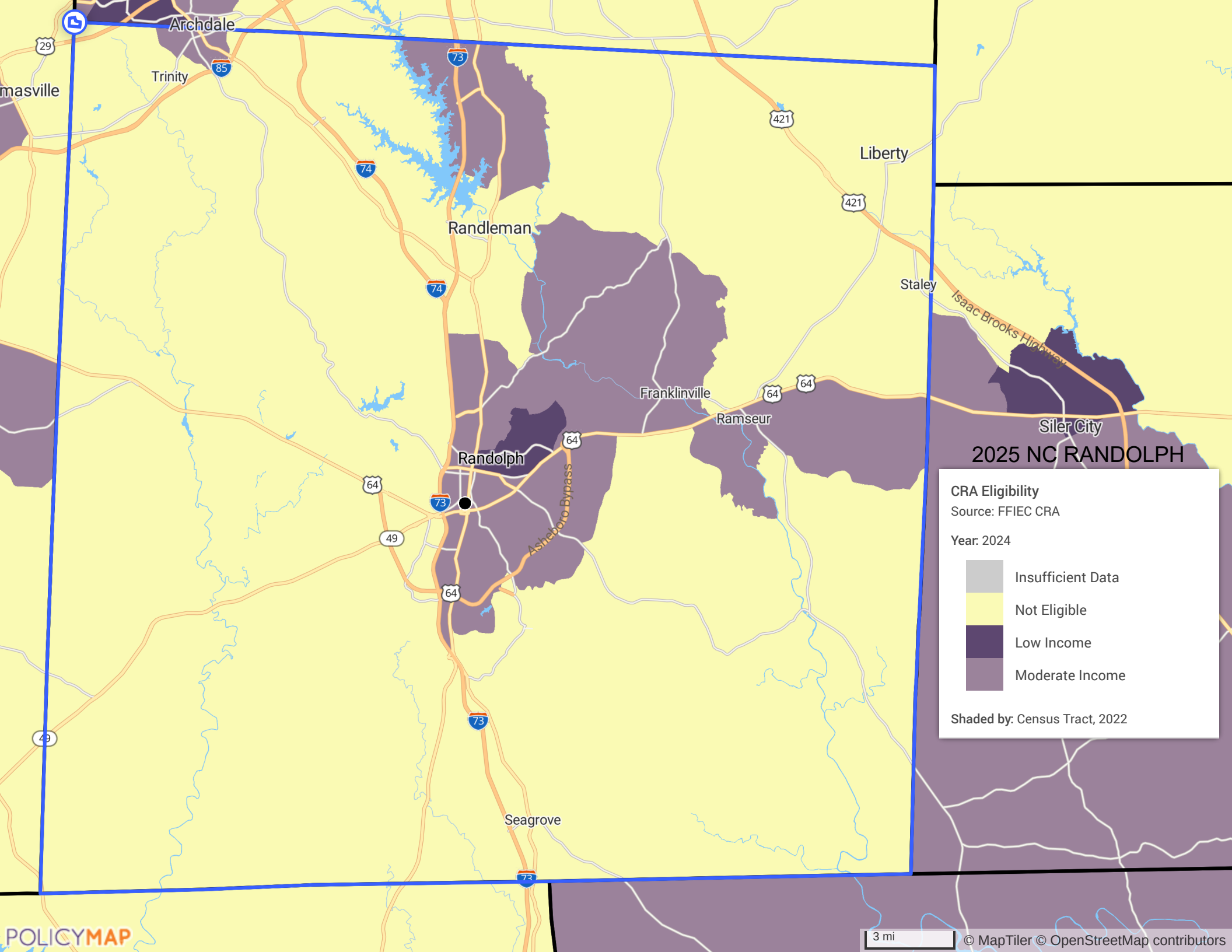


2025 NC NEW HANOVER

CRA Eligibility
Source: FFIEC CRA
Year: 2024

	Insufficient Data
	Not Eligible
	Low Income
	Moderate Income
	Mid. Income Distressed

Shaded by: Census Tract, 2022



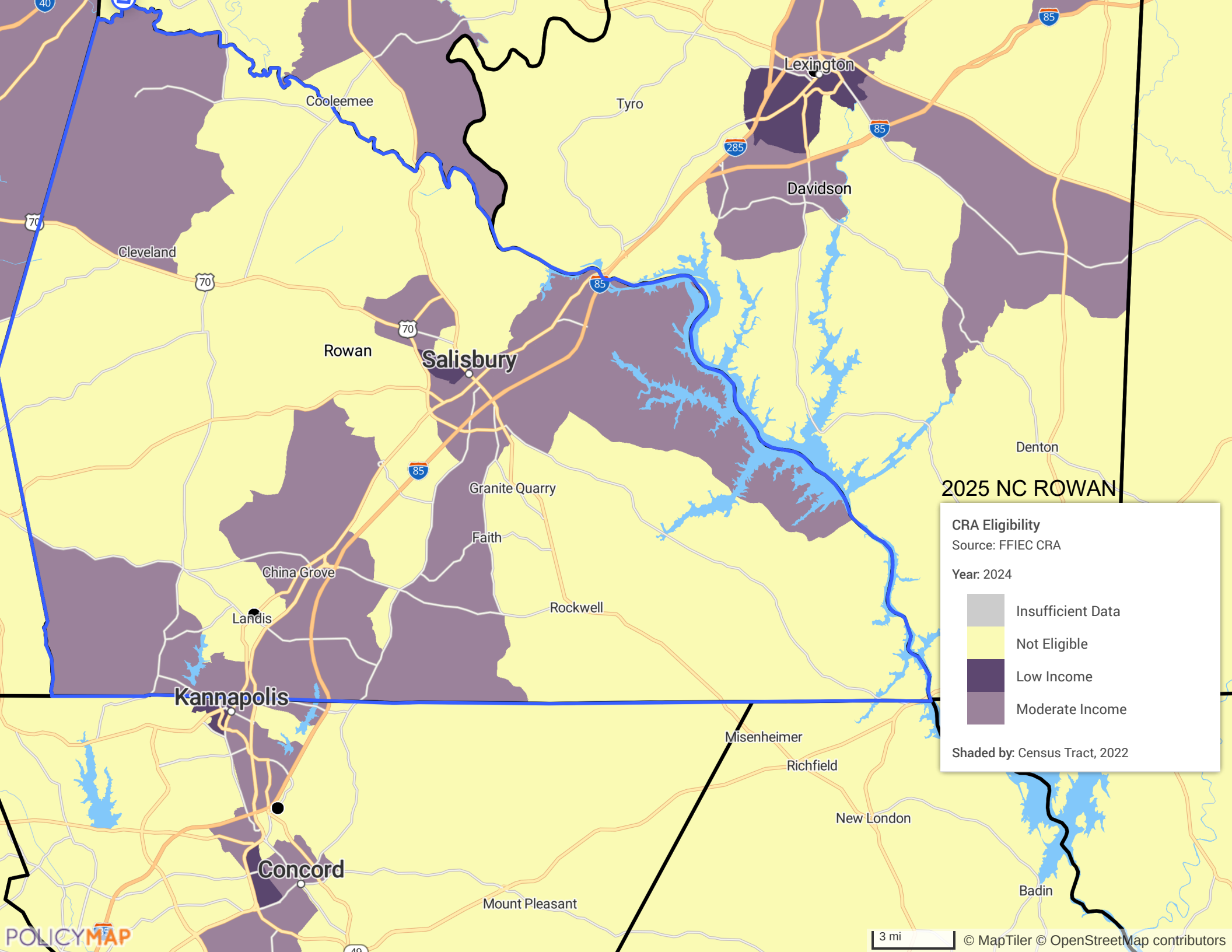
2025 NC RANDOLPH

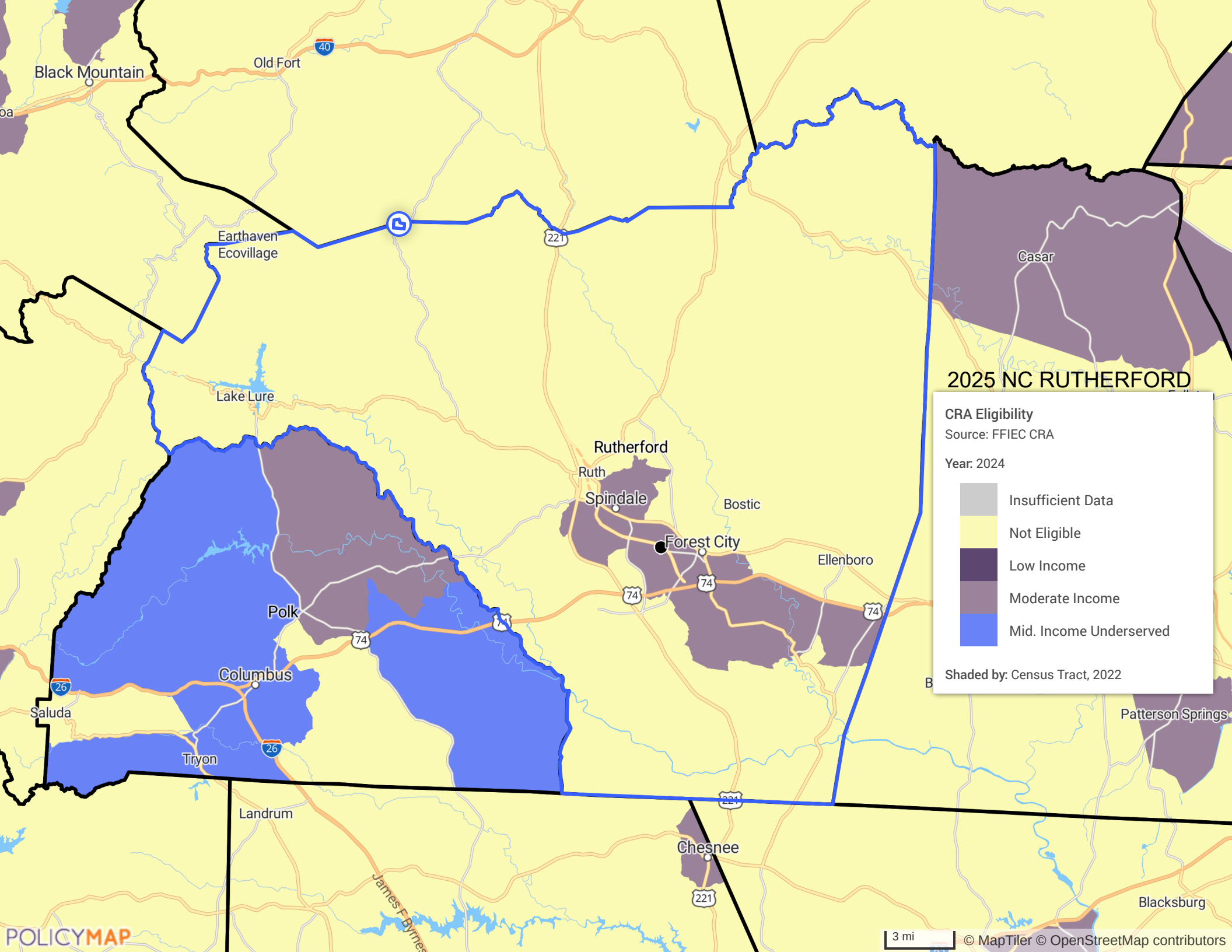
CRA Eligibility
Source: FFIEC CRA

Year: 2024

- Insufficient Data
- Not Eligible
- Low Income
- Moderate Income

Shaded by: Census Tract, 2022





2025 NC RUTHERFORD

CRA Eligibility
Source: FFIEC CRA
Year: 2024

- Insufficient Data
- Not Eligible
- Low Income
- Moderate Income
- Mid. Income Underserved

Shaded by: Census Tract, 2022